

User Manual on Mobile based Expert System for Cattle



Version 1.0

Developed
by
e-Extension Centre,
Tamilnadu Agricultural University(TNAU), Coimbatore in Collaboration with
Centre for Development of Advanced Computing(C-DAC), Hyderabad

Contents

1. Installing Application..... 3

2. Starting Application.....3

3. Decision Support System.....4

4. Health Advisor.....5

5. Information System.....11

6. Closing Application.....12

1. Installing Cattle Expert System Mobile Application

a) Cattle Expert System can be installed on to mobile device by directly clicking on below Google play link

https://play.google.com/store/apps/details?id=com.cdac.tnau_cattle_eng&hl=en

(OR)

Type Cattle Expert System in Google play store. From list of displayed result select “Cattle Expert System”.

b) Click on “Install” button to install Cattle Expert System.

Depending on the available network speed, mobile application will get installed on to the devices within 1 or 2 minutes..

2. Starting Application

To start the **Cattle Expert System** application follow the steps given below:

1. Click on Cattle Expert System icon on application menu.
2. On clicking the Cattle Expert System icon, the application starts and displays “Splash Screen”.
3. Click on PROCEED button, for navigating to Home page of the app.

Home page contains the following options

- a. Decision Support System
- b. Health Advisor
- c. Information System

Splash Screen

Home Page

Cattle Expert System



This Mobile Application is Jointly Developed by
TNAU, Coimbatore & C-DAC, Hyderabad

PROCEED



3. Decision Support System

To start the **Decision Support System** follow the steps given below:

1. Click on Decision Support System button in Home page.
2. On clicking Decision Support System button, list of subtopics related to Cattle Decision Support System will be displayed.
3. Click on list to read related content.

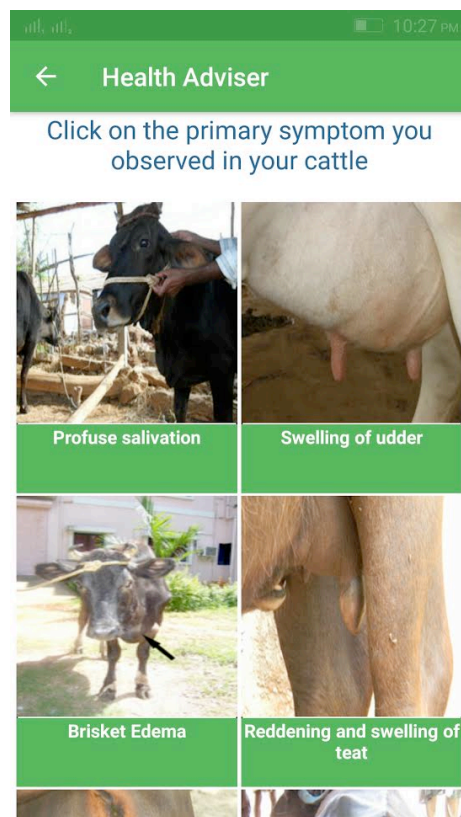


Decision Support System First Screen

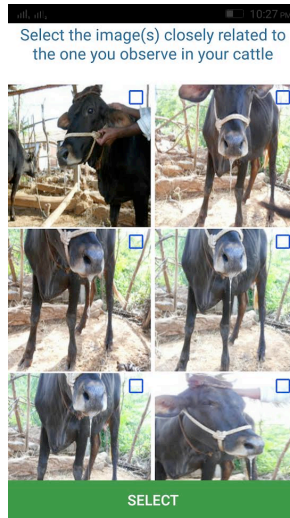
4. Health Advisor

To start the **Health Advisor** follow the steps given below:

1. Click on Health Advisor button in Home page.
2. On clicking Health Advisor button, it displays list of primary symptoms.

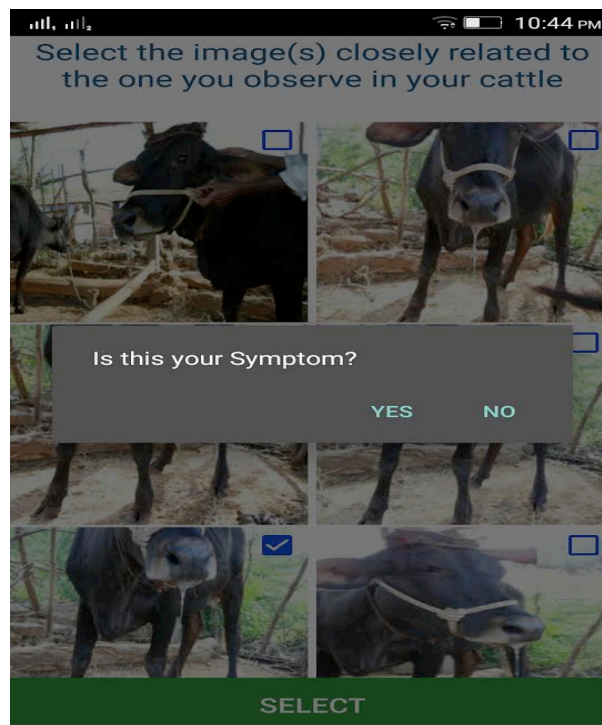


3. Click on primary symptoms that has been observed in Cattle.
4. On clicking primary symptom, images related to respective primary symptom will be displayed.

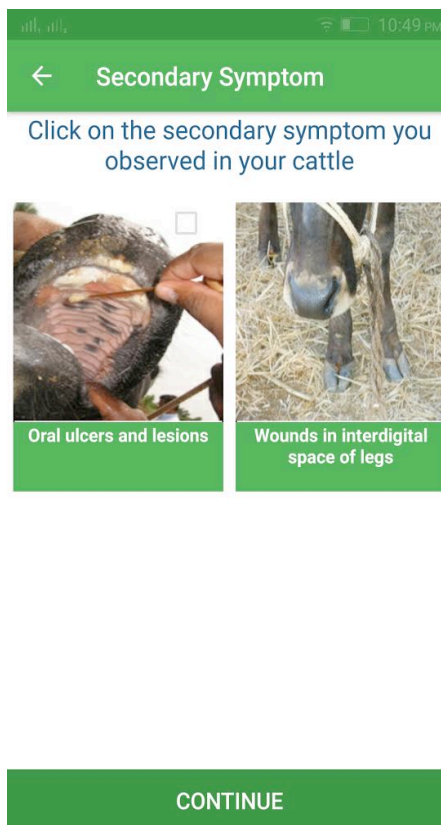


5. Select images that are related to primary symptom and click on “Select” button. (Upto 3 Images can be selected)

6. On clicking “Select” button, “Is this your Symptom?” message will be prompted. If symptom is related to observed symptoms, click on YES button else click on NO button.



7. On clicking on YES button, secondary symptoms related to selected primary symptoms will be displayed.



8. Click on secondary symptoms that has been observed in Cattle.

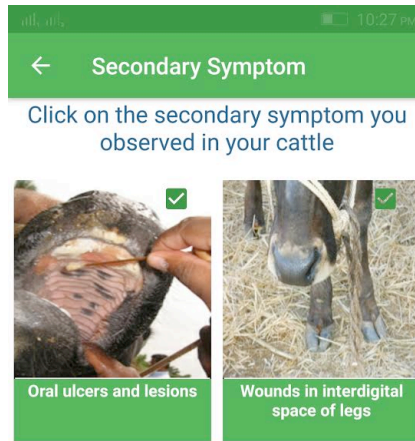
9. On clicking secondary symptom, images related to respective secondary symptom will be displayed.

10. Select images that are related to secondary symptom and click on "Select" button. (Upto 3 Images can be selected)

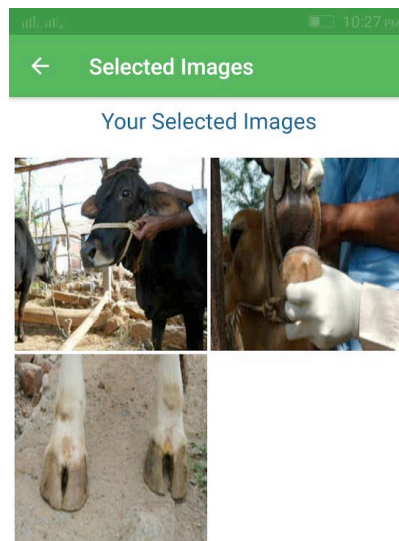
11. On clicking "Select" button, "Is this your Symptom?" message will be prompted.

If symptom is related to observed secondary symptom click on YES button else click on NO button.

12. After selection of secondary symptoms click on CONTINUE button.

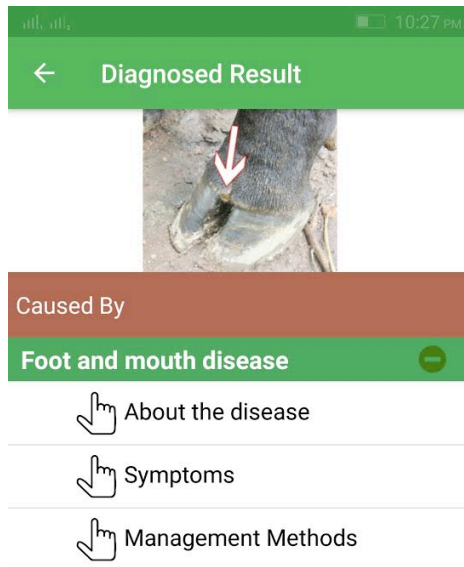


13. On clicking CONTINUE button, list of selected images will be displayed. Click on DIAGNOSE button.



14. On clicking DIAGNOSE button, list of disease(s) caused will be displayed.

15. Click on Symptoms, Identification and Control measure to read related content.



Click on above Symptoms / Identification / Control measures for more details

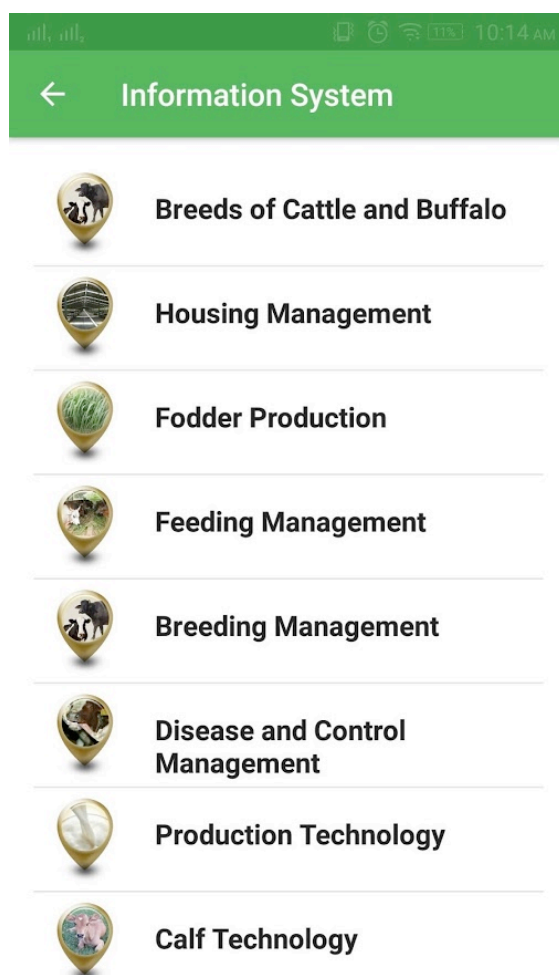
16. Click on VIDEO icon (bottom left icon) to view diseases related video.



5. Information System

To start the **Information System** follow the steps given below:

1. Click on Information System button in Home page.
2. On clicking Information System button, list of subtopics related to Cattle Information System will be displayed.
3. Click on selected list item to read its related content.



6. Closing Application

To close the application follow the steps given below:

1. Navigate to Splash screen.
2. Press back button on the device, prompt will be displayed with message “Are you sure?”. Click on YES button to close the application.

